



Kwendesyakwakwe Kwaipanje Chaka 2021-22



Photo: © UNICEF/2020/Chikondi

1. CHIPANJE CHA CHILAMBO CHA MALAWI

Chipanje cha mchilambo chino utande kwaliji ni tisichikwembechela chijikwela ni 1.9 peleseti chitulwiche ni 0.9 peleseti chaka cha 2020-21. Chipanjechi nambo tisijikwembechela sichijikwela ni 3.8 peleseti chaka cha 2021 nambo sioni sichijikwela ni 5.2 peleseti chaka cha 2022. Ayiyi iwele myiyi utande wakukwesya kwa masengo gaunamalima yayikulosya kuti situlwiche ni 6.2 peleseti chaka cha 2021. Magawo achiipanje nambo sioni sijikwembechela sijichikwela chakachi.

Nambosoni boma tisijichikwembechela mwanti mitengo ya yindu mchilambo chino sijichikwela kuwika pa 7.5 peleseti mu 2021 nambo sioni 7.3 peleseti chaka cha 2022. Nambo boma tisijikwembechela mwanti mitengo yayindu tisinituluche kuwika pa 5.0 pelesenti mu 2022 nambo sioni kuwika pa 3.0 pelesenti chaka cha 2025 likwanilisyedye.

2. MPANGOWACHIPANJE CHA CHAKA CHA CHA 2021-22

Ipango ya chipanje chaka cha 2021-22 iwele jwamiyesi nsanu ni mcheche, ayiyi iwele nyoyo utande wakusinda kwa chaka cha chipanje cha boma chele chitandeje pa 1 April kutyochela chaka cha 2022.

2.1 MBIYA SYOSYOPE BOMA SITICHIKWEMBECHELA KUTI SISIMANIKWE CHAKACHI

Mbiya syosyope boma tisichikwembechela kuti sipatikane chaka cha 2021-22 ni makwacha 1,271.26 biliyoni yele ni 12 peleseti yachipanje syosyope mchilambo chino(GDP). Mbiya sine makwacha 1,100.95 biliyoni tisichikwembechela kutyochela mchilambo muno, nipayiwelele makwacha 170.31 biliyoni ni chikamuchiso boma tisichikwembechela kusimanikwa kutyochela kuilambo ni makugha akusa. Siine mwa mbiya sya mchilambo muno, 82 peleseti kutyochela ku misongo nayiwelele mbiya syasigale boma tisichikwembela kusimanikwa kutyochela ku madera yine kupwatikapo maiko ni makugha akusa kwa chilambo chino.

Chaka cha 2021-22, boma tisichikwembechela kusimanikwa mbiya syakwanila makwacha 1,044.05 biliyoni kutyochela kumisongo yele ni yakutulucha ni 6.5 pelesenti pakulandanya ni mbiya syosyope boma lisimanikwe chaka cha 2020-21.

Mundawi myeyi nambo mbiya sine boma tisijikwembechela kupata mchilambo chino munjira yine ni yine kupatulapo misongo tisichikwembechela ijinjile pesi kuwika makwacha 56.9 biliyoni kutyochela makwacha 63.1 biliyoni chaka cha 2020/21 kwele situlwiche ni 10.9 pelesenti. Ayiyi iwele myiyi utande kusinda kwa chaka cha boma.

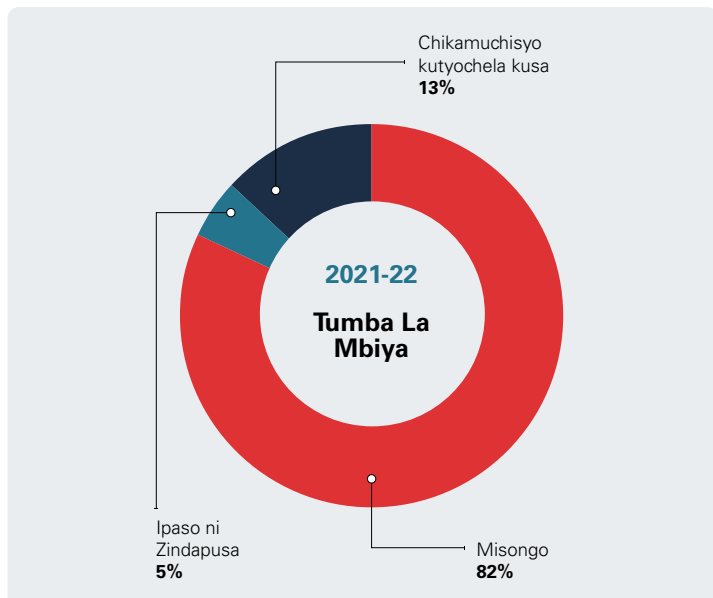
Mbiya syosyope boma tisijikwembechela kutyochela kumaiko akusa syakwanila makwacha 170.31 biliyoni, mbiya syakwanila makwacha 58.43 biliyoni tisichityochela kuyilambo yakusa chisau cha Norway, Germany, ni Ireland. Pajili makwacha 111.88 biliyoni tisijichityochela ku makuga akusa chisau Banki la mchilambo chosyope, mkamulano wayilambo wakulaya, ni kuga nla kusa syachitukuko chaunamalima (International Fund for Agriculture Development). Mbiyasi situlwiche ni 50 pelesenti, kulandanya ni yele makuga ni yilamboyi waipale chaka cha 2021-22.

2.2 KAKAMULISYE MASENGO KAMBIYA

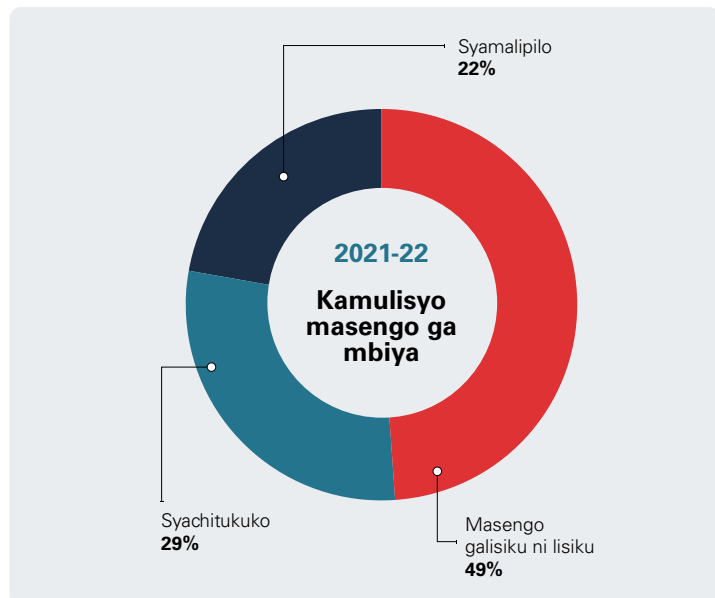
Chaka cha 2021-22, Boma tisijichikwembechela alitendele masengo mbiya syakwanila 1,995.1 biliyoni yele ni 19.4 peleseti yachipanje syosyope mchilambo chino (GDP) Mbiya situlwiche ni 9.2 peleseti kulandanya ni yele boma alitendele masengo chaka chipite cha 2021/22 yele iwele syakwana makwacha 2,190.18 biliyoni. Syine mwa mbiyasi chaka cha 2021-22, makwacha 1,424.3 biliyoni tisijikamuchisya kwendesya masengo gaboma galisiku nilisiku nambo umu iwele mu chitusi chili mwichelachi.

Mbiya syakwanila makwacha 570.84 biliyoni (29 peleseti) syakwendechesya masengo ga chitukuko nambo makwacha 9.60 biliyoni sya mbiyasi tisijithyochela mchilambo muno, mbiya syakwanila makwacha 351.24 biliyoni tisijityochela kuyilambo ni makuga gakusa.

CHITUSI 1



CHITUSI 2



Chaka cha 2021-22, mbiya sitichijipata boma tisichinandipila ni makwacha 723.8 biliyoni pakulandanya ni mbiya siyasikusosekwa kamula masengo chaka chelechi.

2.3 MBIYA SYAKUPELEMBELA

Chaka cha 2021-22, mbiya sitichijipata boma tisichinandipila ni makwacha 723.8 biliyoni pakulandanya ni mbiya siyasikusosekwa kamula masengo chaka chelechi. Pelepo boma tijichisosekwa kwasimana mbiya syakwanila makwacha 180.23 biliyoni kutyochela kusa nambosoni makwacha 589.1 biliyoni kutyochela mchilambo muno.

TEBULO 1 IPANGOYA CHIPANJE 2021-22 (MK' MILIYONI)

Gawo	2020-21 Bajeti	2020-21 Yakusinda pachilikati pachaka	2021-22 Bajeti
Mbiya syakuyinjila	1,435,051	1,523,376	1,271,261
Syamchilambo muno	1,179,345	1,185,829	1,100,946
Misongo	1,116,265	1,116,265	1,044,051
Lipaso ndi chindapusa	63,080	69,564	56,895
Syikamuchisyo	255,705	337,547	170,314
Kutyochela kuilambo ine	34,755	40,178	58,430
Kutyochela kumakugha gakusa	220,950	297,369	111,884
Mbiya syakamula masengo	2,190,180	2,335,053	1,995,101
Syakamula masengo galisiku ni lisiku	1,678,993	1,719,213	1,424,263
Syamalipilo gawandu gakatenda masengo boma	538,018	542,157	449,615
Syamalipilo	523,680	525,280	436,324
Sya peshoni	14,338	16,877	13,290
Chongola nkono	376,014	376,014	299,728
Gogoli syakujigalidwa kusa	11,854	11,854	14,474
Gogole syakujigalidwa mchilambo muno	364,160	364,160	285,254
Yakusumila ndundu ni umisilii	309,211	347,065	269,642
Ndundu ndi umisili	185,169	223,829	164,769
Syaumi	60,145	59,625	49,026
Syaunamalima	7,550	7,350	4,989
Yamapunsilo	35,045	34,205	29,783
Gogoli zokhalitsa (Arrears)	7,000	7,000	5,000
Syakusungila ndundu Storage levy expenses)	2,984	2,984	2,875
Syakusumila imanga	10,000	10,353	12,000
Yachisagula	1,318	1,718	1,200
Mbiya syakwaula kumakuga	177,240	184,181	154,000
Syakwaula kumakampani ga boma	177,240	184,181	154,000
kugha lalipila miseu (Roads Fund)	33,991	33,991	31,332
Kugha lakutawa miseu (Roads Authority)	4,416	4,416	3,312
Kugha lakulokotela misongo (MRA)	32,396	32,396	30,992
Makampani wakamuchisya ni boma (Subvented Organisations)	97,437	104,378	79,363
Yakwasimisya (Net Lending)	9,000	9,000	9,000
Jwakamulisya wandu	266,010	248,250	221,825
Yindu yaunamalima jwakutuluka mtengo	160,169	141,996	141,988
Sya wandu a peshoni	102,840	103,254	77,588
Chakwesya mlango	3,000	3,000	2,250
Yakupila yine ni yine	12,500	21,547	29,453
Syachitukuko	511,188	615,840	570,838
Yilambo ni makuga akusa	410,295	511,129	351,243
Sya muno muno pe	100,893	104,711	219,595
Gogoli	755,130	811,677	723,840
Kutyochela kusa	224,779	246,265	134,774
Syamchilambo muno	530,351	565,412	583,544

3. IPANJEYAYIKULUNGWAYA NDANDANDA WA CHIPANJE GAMASENGO GABOMA

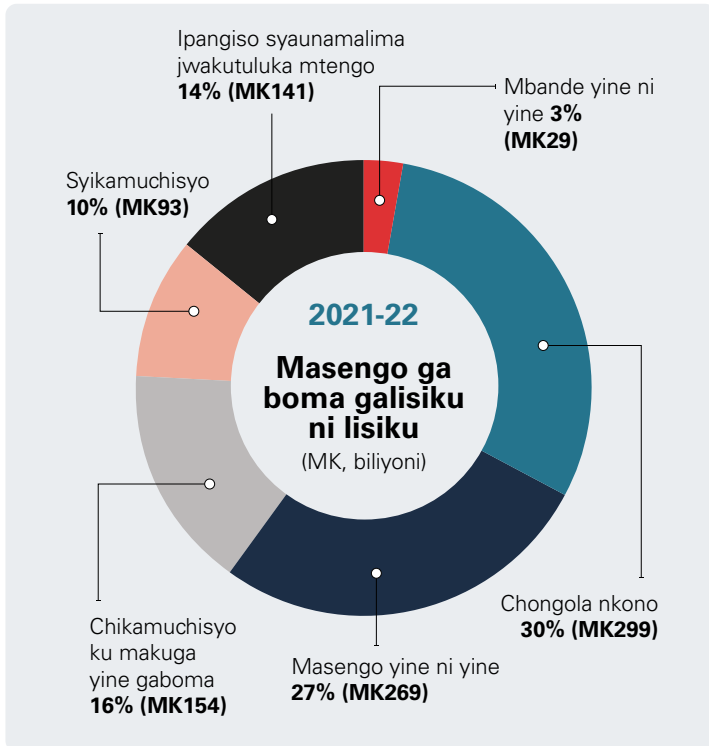
3.1 MALIPILO GA WANDU WAKAMULA MASENGO M'BOMA

Mbiya syakwana makwacha 436.32 biliyoni mu ipango syakwendesya boma sya 2021-22 gapele malipilo wandu wakamula masengo boma pa miyesi isanu ni ncheche. Ayiyo situlwiche ni 16.7 peleseti kulandanya ni miyesi likumi ni iwiri chaka cha 2020-21 ayiyo ivele makwacha 523.68 biliyoni.

3.2 MASENGO GALISIKU NI LISIKU GA BOMA

Mbiya syosyope boma lalitendele masengo galisiku ni tsiku ni makwacha 987.9 biliyoni yele situlwiche ni 14.9 peleseti kulandanya ni yele ikamule masengo mnopo mu chaka cha 2020-21. Chitusi chili mwichelachi chikulosya mbande sya mbiya sikamuchisye masengo.

CHITUSI 3



3.3 SYACHITUKUKO

Masengo syachitukuko sipegwigwe mbiya syokwanila makwacha 570.8 biliyoni yeleyi jikwesile ni 11.7 pelesenti pakulandanya ni chaka cha 2020/21 yele myiyo makwacha 511.2 biliyoni. Mbiya syine makwacha 351.2 biliyoni chaka cha 2021-22, tisityochela kuyilambo ni makuga akusa nambo makwacha 219.6 biliyoni tisityochela mchilambo munomuno.

4. KAGAWANYE KA CHIPANJE MWAKILANA NI SICHI NAMBOSONI LISOSA LYA 2063

Chitusi chili mwichelachi chikulosya kagawanye ka chipanje mwakilana ni sichi lya mchilambo chino nambosoni lisosa 2063.

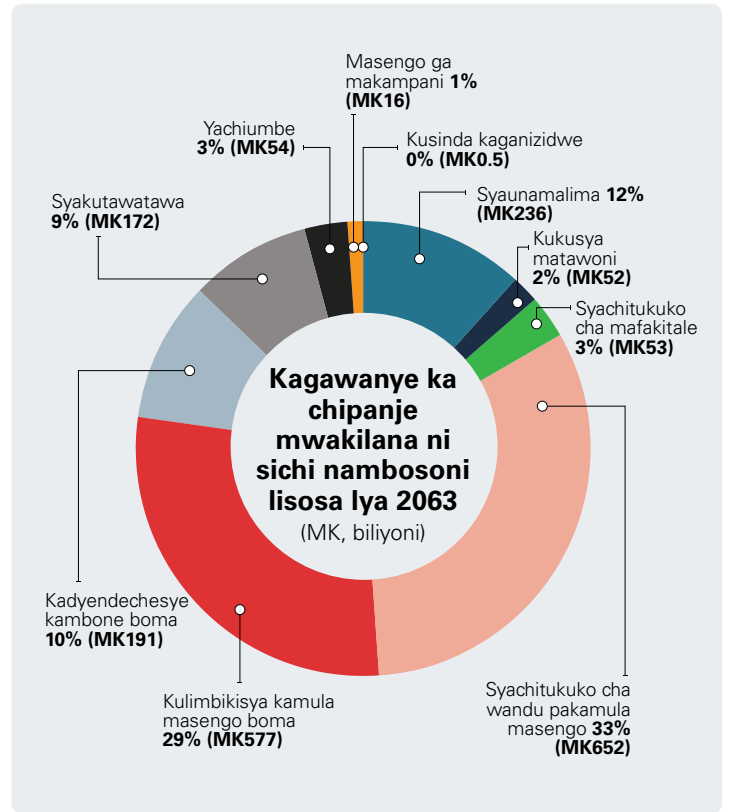
4.1 KAGAWANYE KA MBIYA MWAKILANA NISICHI SYA MCHILAMBO CHINO

Kagawanye ka mbiya mu ipango yachipanje cha 2021-22 mwakilana ni sichi sya mchilambo chino lisosa lya 2063 ili mwantiyi: 12 pelesenti gipengwigwe kusaunamalima, 3 pelesenti yakutawa misinda yapamwamba nambo 2 pelesenti kukusya mafakitale ni migodi.

4.2 KAGAWANYE KA MBIYA SYABOMA ZAKULANDANYA

Kagawanye ka mbiya muyipango yachipanje cha 2021-22 pakulandanya ni ipango gakwesya ni kutukula chilambo chino a 2063 ali mwantiyi: 32.7 peleseti jupite ku chitukuko cha wandu paluso lakamuchisya masengo, 29 peleseti ku kulimbikisya kakamuchisye masengo gaboma, 9.6 peleseti kadyendesedwe kambone ga boma, ni 9 peleseti yine kuyitukuko ga chipanje.

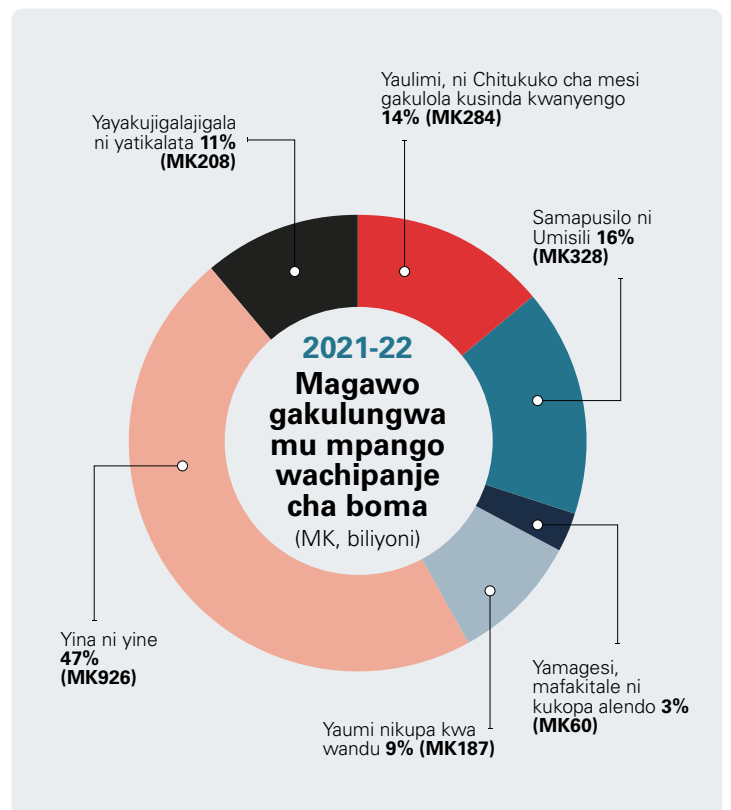
CHITUSI 4



5. MAGAWO GAKULUNGWA MU MPANGO WACHIPANJE CHA BOMA OKHUDZA ACHISYENE CHILAMBO

Yine mwambande syakulungwa yele yipindulile achisyene chilambo mu mpango wachipanje cha 2021-22 yi li mwantiyi.

CHITUSI 5



MPANGO WACHIPANJE PAKUJIGALIRA MASENGO GAMAKULUNGWA GA BOMA (MK, BILIYONI)

